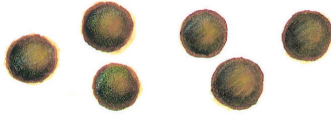


THE BRISTOL STOOL FORM SCALE (for children)

choose your

POO!

type **1**



looks like:

rabbit droppings

Separate hard lumps, like nuts (hard to pass)

type **2**



looks like:

bunch of grapes

Sausage-shaped but lumpy

type **3**



looks like:

corn on cob

Like a sausage but with cracks on its surface

type **4**



looks like:

sausage

Like a sausage or snake, smooth and soft

type **5**

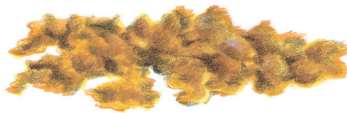


looks like:

chicken nuggets

Soft blobs with clear-cut edges (passed easily)

type **6**



looks like:

porridge

Fluffy pieces with ragged edges, a mushy stool

type **7**



looks like:

gravy

Watery, no solid pieces ENTIRELY LIQUID

Concept by Professor DGA Candy and Emma Davey, based on the Bristol Stool Form Scale produced by Dr KW Heaton, Reader in Medicine at the University of Bristol.

©2005 Produced by Norgine Pharmaceuticals Limited, manufacturer of MOVICOL® Paediatric Plain

MOVICOL® Paediatric Plain
macrogol 3350, sodium bicarbonate, sodium chloride, potassium chloride